

# TKP

## Adjustable thermostat

### TECHNICAL DATA

<b>Rated voltage</b>	250V
<b>Rated current at power coefficient 0,6</b>	2,5A - 1,5A
<b>Rated current at power coefficient 0,95</b>	16A - 10A
<b>Number of automatic cycles</b>	100.000 (10A)
<b>Operating temperature (°C)</b>	0-40 / 0-100 0-150 / 25-250
<b>Tolerance of operating temperature</b>	±2° / ±5° / ±8° / ±10°
<b>Reset temperature (°C lower than oper.temp.)</b>	5 / 8 / 10 / 15
<b>Transient resistance</b>	0,01Ω - 0,05Ω
<b>Electric strenght of insulation</b>	1.500V
<b>Insulation resistance</b>	50 MΩ
<b>Heating speed</b>	1 K/min
<b>Turning range</b>	270° / 306°

TKP is a cyclic operation temperature sensitive device, which is intended to keep temperature between two particular values under normal operatnig conditions, automatically switching on or off the electrical circuit. once the temperature of the bimetal plate has returned to the specified reset temperature, the contacts will automatically return to their original state. operating temperature of this thermostat is adjusted by rotating the shaft. this thermostat can be built to either open or close its electrical contacts as the temperature increases. the current sensitive can be built to either open or close its electrical contacts as the temperature increases. the currnet sensitive model of this thermostat is also available. in this case it is also a regulator of energy. these thermostats are widely used throughout the heating and cooling appliance industry and are designed for smooth regulation of temperature for variety of heating and cooling devices

# TKPCS

## Current sensitive adjustable thermostat

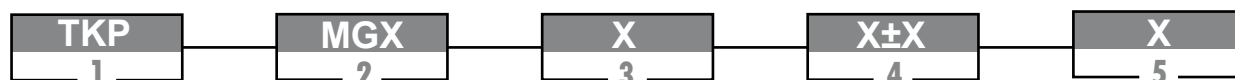
### TECHNICAL DATA

Rated voltage	250V
Rated current at power coefficient 0,6	2,5A - 1,5A
Rated current at power coefficient 0,95	16A - 10A
Number of automatic cycles	100.000 (10A)
Operating temperature (°C)	-25 / +250
Tolerance of operating temperature	±10° / ±20°
Reset temperature (°C lower than oper.temp.)	5 / 8 / 10 / 15
Transient resistance	0,15Ω
Electric strenght of insulation	1.500V
Insulation resistance	50 MΩ
Heating speed	1 K/min
Turning range	270° / 306°

Table 1.1 (CONTACT TYPE AND CONTACT TRANSIENT RESISTANCE VALUE)

CODE	CONTACT TYPE	CONTACT RESISTANCE
1	Normalmente chiusi (NC)	≤50 mOhm
2	Normalmente aperti (NA)	≤50 mOhm
3	Normalmente chiusi (NC)	≤10 mOhm
4	Normalmente aperti (NA)	≤10 mOhm

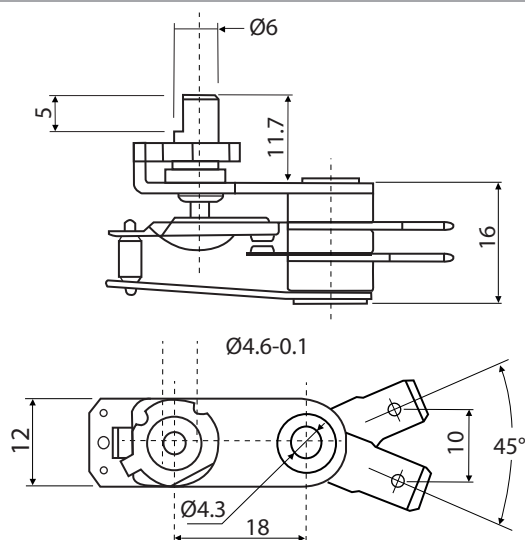
### PART ORDERING SYSTEM



1	Thermostat model TKP; TKPCS (current Sensitive)
2	Mounting: A with one mounting hole; B with three mounting holes
3	Contact type and contact transient resistance value (Table 1)
4	Operating temperature range in °C
5	Rated current

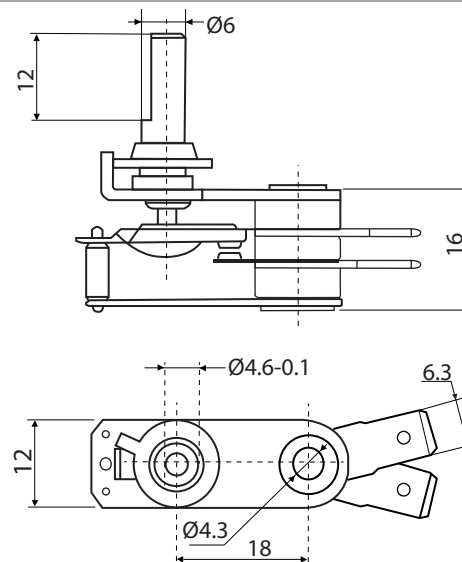
EXAMPLE: TKP - MGA - 1 - 0°C - 60°C - 10

## TKP-1



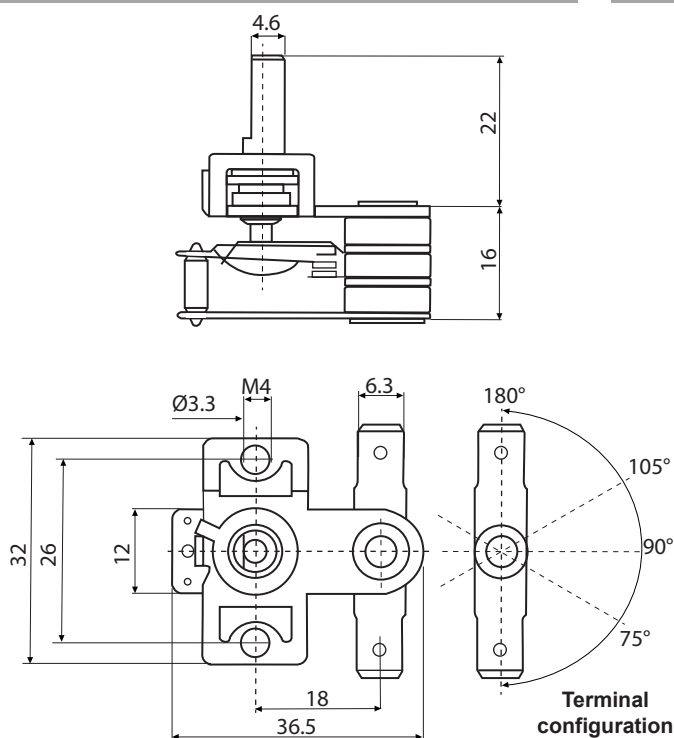
from -45°C to +120°C (with plastic knob)

## TKP-2



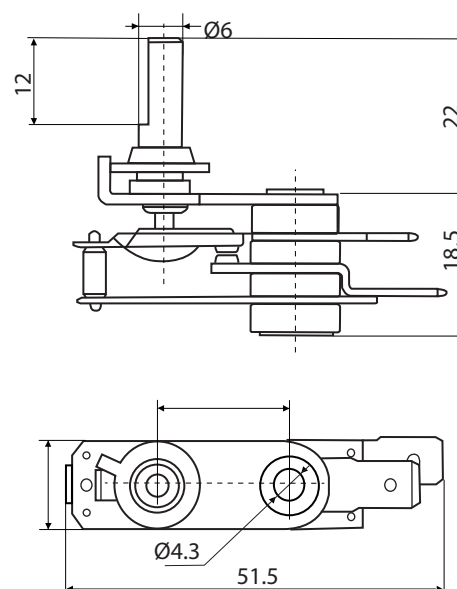
from -45°C to +120°C (with plastic knob)

## TKP-3



from -45°C to +250°C (with brass knob)

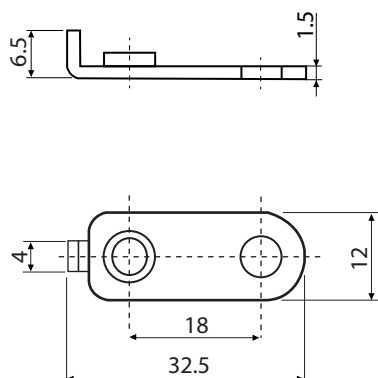
## TKPCS



The terminal and knob configuration can be customized according to the need

## MOUNTING

### MGA



### MGB

